

Counseling, Academic Advising, Special Services & Special Populations



Counseling

Counselors are available to assist new, current and former students who are undecided about their Macomb program, major, school of transfer or career path. Information shared in a counseling session will be kept confidential. Counselors are available on a walk-in basis or by appointment. All Macomb counselors are licensed by the state of Michigan.

Counselors help you

- decide on your program/major
- choose a college for transfer
- clarify your career options
- research careers including labor trends and salary info
- research college, university and vocational school info
- make decisions about your educational goals
- clarify your interests, aptitudes, values and skills
- explore options that match your needs
- identify your career goals
- plan realistic steps to achieve your goals
- identify problems, plan solutions and provide support during life transitions

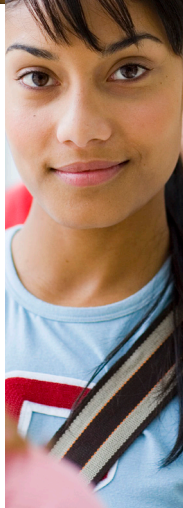


Academic Advising

Academic advisors are available to assist new, prospective and current students who are decided about their Macomb program or major and school of transfer. Information shared in an advising session will be kept confidential. Advising services are provided on a walk-in basis—no appointment is necessary.

Academic Advisors help you

- obtain information about placement testing, courses of study available at Macomb and the appropriate registration procedures
- select classes for Macomb's associate degree and certificate programs
- understand Macomb's graduation requirements
- interpret placement scores
- provide a transfer guide that will identify appropriate Macomb coursework to be completed if you are transferring to a four-year institution
- interpret Macomb's catalog and schedule of classes
- explain College policies, procedures, and student rights and responsibilities
- seek the appropriate College resources



Special Services

The Special Services counselors work with students who need special assistance to succeed in college due to a physical disability, learning disability, insufficient learning skills or language barrier.

Our staff helps with

- specialized counseling
- evaluation of student interests and abilities
- career awareness and exploration
- specially designed orientations
- networking within the College and agencies
- referrals for tutoring to the Learning Center and Reading and Writing Studios
- coordination of services to persons with disabilities such as notetakers and interpreters
- alternative testing arrangements
- registration assistance

We help students who

- have a low grade point average (GPA)
- are on academic probation
- are referred by faculty or outside agencies
- are economically disadvantaged
- have limited English proficiency (LEP)
- have a physical or learning disability that may present obstacles to success in the college classroom

Counseling & Academic Advising Services

South Campus, J160
586.445.7999
Fax: 586.498.4033

Center Campus, H103
586.445.7999
Fax: 586.286.2295

Special Services

South Campus, J160
586.445.7420
TTY 586.445.7498
Fax: 586.498.4033

Center Campus, H103
586.286.2237
TTY 586.286.2238
Fax: 586.286.2295

Special Populations

The Special Populations Program is a network of support established at Macomb Community College to help members of eligible population groups find direction in their lives and obtain the job skills necessary to provide financial support and develop independence for themselves.

If you describe yourself as one of the following, you may qualify for this program:

- displaced homemaker
- homemaker
- single parent
- single expectant mother
- interested in a non-traditional career
- Michigan Works!

Our staff helps with

- financial assistance (tuition, fees and required books may be paid for by the program)
- assessment testing and evaluation
- counseling
- referrals for tutoring to the Learning Center and Reading and Writing Studios
- occupational information on non-traditional careers
- occupational education and training
- job placement services
- Transitions workshops

Special Populations

586.445.7003
Fax: 586.498.4033

Monday & Tuesday, 8 am–6 pm
Wednesday, Thursday & Friday, 8 am–4:30 pm
Please call for walk-in availability as it varies.

For general information:

Information Center: 866.Macomb1 (866.622.6621)
www.macomb.edu
email: answer@macomb.edu