

FLORAL DESIGN

Employment Outlook

Opportunities include: Floral Shop Manager /Owner, Floral Shop Designer/ Stylist, Wholesale Marketing and Visual Merchandising, Entrepreneur Floral Designer.

Average Hourly Rate: \$9 - \$20

Growth Rate: 15%



An informational workshop to learn about Floral Design careers is scheduled for Thursday, September 4 from 6:30-7:30 PM at South Campus H214. Call 586.498.4000 or email continuing@macomb.edu to reserve a space.

Exploring Floral & Event Planning Careers

FLOR-9005

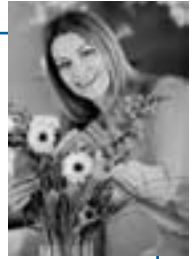
Discover the many career opportunities in the floral and event planning industries. Learn about the preparation courses for the Michigan Floral Association's Professional Certification program.

58839M9/8.....6-9 PM.....\$39.....Sou-C205.....R. Gleason, MCF

**Michigan Floral Association (MFA) Prep Program
will be returning in January 2009**

Certificate in Basic Floral Design

Students successfully completing the four core classes and one elective will receive a Macomb CCE Certificate in Basic Floral Design.



Fundamentals: Floral Design I

FLOR-8000B

Learn basic principles and elements of professional floral design, using step-by-step instruction techniques. Work with fresh flowers and learn about needed supplies. Create four arrangements to take home. Students will receive a Macomb Floral Design apron. Text required-see page 51.

58840M9/15-10/136-9 PM.....\$195.....MTEC 116.....R. Gleason, MCF

Fundamentals: Floral Design II

FLOR-8001

Discover the techniques and principles of interpretive and line design. Create a fresh flower arrangement each week. Prerequisite: Fundamentals: Floral Design I. Text required-see page 51.

58841M10/20-11/36-9 PM.....\$159.....MTEC 116.....R. Gleason, MCF

Intermediate Floral Design

FLOR-8007

Take your designs to the next level while using techniques learned in Fundamentals I and II. Add your own special touches to more advanced designs. Create an arrangement at each class session to take home. Prerequisite: Fundamentals-Floral Design II.

58842T11/11-11/256-9 PM.....\$159.....MTEC 116.....K. Kiekbusch

Advanced Floral Design

FLOR-8002

Continue to develop your skills. Experience the use of a greater variety of materials and work on a larger scale. Gain confidence to make your own design choices. Prerequisite: Intermediate Floral Design.

58843T12/2-12/166-9 PM.....\$159.....MTEC 116.....K. Kiekbusch

Floral students must bring a quality floral knife

(smooth blade, not more than 3" long), wire cutters and scissors.

All fresh floral materials and containers are included in the price.

Students will take their designs home.



Create culinary bouquets and centerpieces using candies, cookies and fruits – see page 14.

Specialty Designs-Elective Classes**Archway Designs****FLOR-8024**

Craft a magnificent archway design for the entrance to your parties, weddings, mantels and staircases. Prerequisite: Fundamentals-Floral Design I.

58844 TH 11/6-11/20 6-9 PM..... \$149 MTEC 116 A. Golovan

Breath Taking Bridal Headpieces & Flower Girl Designs FLOR-8023A

Bridal floral design at it's finest. Create floral headpieces for the bride, bride's maids and the flower girl. Prerequisite: Fundamentals - Floral Design II.

58845 TH 9/18-10/9 6-9 PM..... \$159 MTEC 116 A. Golovan

Colonial Williamsburg Christmas Design FLOR-8011

Recreate a favorite Williamsburg arrangement and turn your home into an 18th century wonderland this Christmas. \$20 material fee payable to instructor. No experience needed.

58853 W 12/3 6-9 PM..... \$69 ASM-CUL R. Gleason, MCF

Fabulous Fall: Floral Centerpiece**FLOR-8012****★NEW★**

Design a beautiful Fall themed centerpiece to grace your table, using seasonal fresh flowers and other materials.

58846 W 11/12 6-9 PM..... \$69 MTEC 116 P. Birch

High Style Floral Design**FLOR-8036****★NEW★**

Break away from the classical or traditional styles and explore the wonderful world of floral art. Contemporary European design techniques studied in class. Prerequisite: Fundamentals-Floral Design II.

58847 M 11/10-11/24 6-9 PM..... \$159 MTEC 116 R. Gleason, MCF

Holiday Design**FLOR-8004**

Using a variety of fresh, fragrant evergreens, pine cones, ornaments and ribbons, create a long lasting and festive arrangement.

58849 TH 12/11 6-9 PM..... \$69 MTEC 116 P. Birch

Porch Pots**FLOR-8037****★NEW★**

Don't put away those summer containers! Dress up your porch or patio with seasonal items, plants, greenery, and more.

Amazing Autumn

58850 T 9/30 6-9 PM..... \$69 MTEC 116 P. Birch

Happy Holidays

58851 W 12/3 6-9 PM..... \$69 MTEC 116 P. Birch

Wedding Bouquets and Corsages**FLOR-9002A**

Create the latest & greatest in wedding designs with hand tied and cascading bouquets. Learn the latest gluing techniques in making corsages and boutonnières. Prerequisite: Fundamentals: Floral Design I. Text required-see page 51.

58852 T 10/14-11/4 6-9 PM..... \$169 MTEC 116 K. Kiekbusch

Call or email continuing@macomb.edu after all classes have been completed to request your Macomb CCE program certificate.

GARDENING**Autumn Jewels****GRDN-8012****★NEW★**

Discover the native plants and the science behind the breathtaking Michigan fall color display.

58781 TH 10/23 6:30-8 PM..... \$29 ASM-CUL C. English

Introduction to Bonsai**FLOR-8034**

Explore the history and philosophy of the exciting art of bonsai. Learn artistic principles and concepts used for generations to create realistic, visually pleasing miniature trees in pots. Design and create your own bonsai from raw material. Tuition includes a tree suitable for bonsai, pot, soil, and wire for styling

58579 TH 9/18-9/25 6:30-9:30 PM..... \$68 SOU D212 W. Heath

58580 TH 10/23-10/30 6:30-9:30 PM..... \$68 SOU D212 W. Heath

58581 TH 11/13-11/20 6:30-9:30 PM..... \$68 SOU D212 W. Heath



Thinking of starting
your own floral design or
landscape design business?
Consider our entrepreneurial
classes on page 32.